

Last Name:

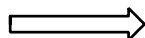
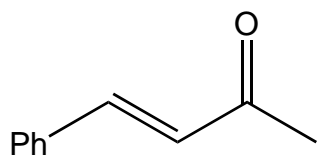
First Name:

UTEID:

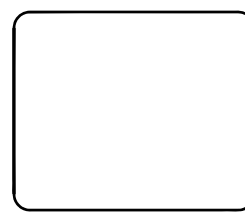
SCORE:

Deadline for CH 310 POW 10: Nov 9, 2009 3:00 PM

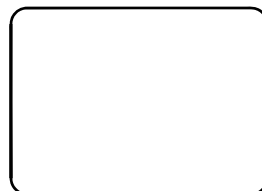
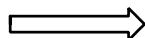
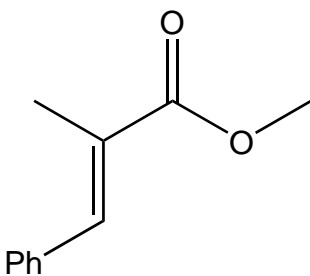
**Retro synthesis:** For each product, provide the starting materials. Each of these reactions will involve an enolate condensation, such as an aldol or Claisen etc.



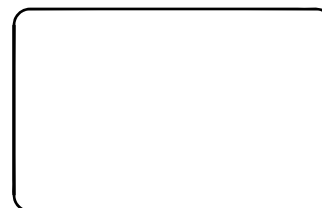
aldehyde



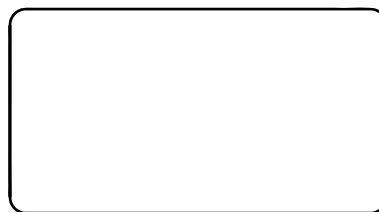
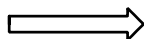
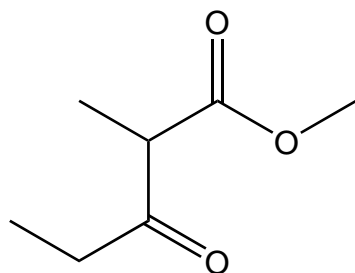
ketone



aldehyde



ester



ester--(hint: it's a Claisen)

**Multi-step synthesis:** Provide products for the following sequence of reactions. Draw each product in the box provided.

