

Last Name:

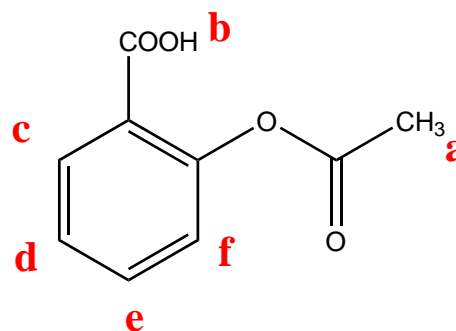
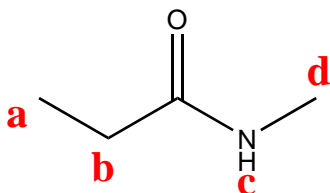
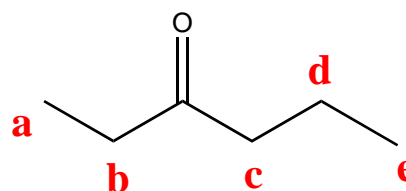
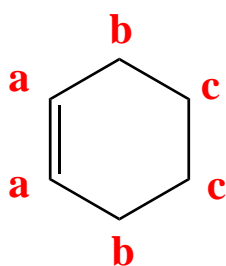
First Name:

UTEID:

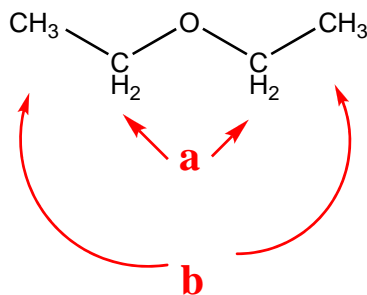
SCORE: KEY

DEADLINE FOR POW 2: SEPT 14, 2009 3:00 PM

Instructions for this set: For the following structures, label the equivalent protons with the "a, b, c" lettering system.



Asprin (salicylic acid)



CALCULATE THE INDEX OF HYDROGEN DEFICIENCY IN THE FOLLOWING FORMULAS:

		Reference Hydrocarbon	Index of Hydrogen Deficiency
C_7H_{12}	\longrightarrow	C_7H_{16}	$\frac{16-12}{2} = 2$
$C_4H_8O_2$	\longrightarrow	C_4H_{10}	$\frac{10-8}{2} = 1$
$C_5H_{10}O$	\longrightarrow	C_5H_{12}	$\frac{12-10}{2} = 1$
$C_5H_{12}O$	\longrightarrow	C_5H_{12}	$\frac{12-12}{2} = 0$
C_3H_6O	\longrightarrow	C_3H_8	$\frac{8-6}{2} = 1$